

Chettinad Cement Corporation Private Limited
Ariyalur Trichy Road
Keelapaluvur -621707
Ariyalur (Dt)

KARUPPUR KILAPALUVUR LIMESTONE MINES (AREA: 26.145 HECTARES)

Compliance report for the conditions specified in the renewal consent Order

2505257546779 dated 01/02/2025 under Air Act

| No. | Special Additional Conditions | STATUS OF COMPLIANCE |
|-----|---|---|
| 1 | The unit shall obtain No Objection Certificate (NOC) from the Tamil Nadu Bio Diversity Board/National Bio Diversity Authority if the unit is using any Biological resources or knowledge associated thereto as per the provisions of Biological Diversity Act 2002. | We are not using any Biological resources or Knowledge associated thereto as per the provisions of Biological Diversity Act 2002. Hence this condition is not Applicable. |
| 2 | The industries shall take all efforts to use and popularize "Mission LiFE" logo and mascot which is available in TNPCB & MoEFCC website. They shall also request their employees to adopt "Mission LiFE" action points and document the same and furnish half yearly report to Board. | We have taken efforts to adopt the "Mission LiFE" in our activities life meeting and in our Awareness programs. Every Month "Mission LiFE" pledge has been taken by our entire Plant & Mines team in a Common meeting forum. Reports on this activities are enclosed as Annexure 1 |

| No. | Additional Conditions | STATUS OF COMPLIANCE |
|-----|---|---|
| 1 | The unit shall carryout mining activity as per the latest approval issued by IBM ,Chennai dated: 10.12.2020 for the quantity mentioned therein to the corresponding year. | We have carried out Mining Activity as per Approved Mining Plan only. |
| 2 | The unit shall operate and maintain the Air Pollution Control measures efficiently and continuously so as to bring the quality of emission to the Ambient Air Quality / Emission standards prescribed by the Board. | Regular and Periodical water sprinkling on the haul roads carried out to arrest the dust generation during the movement of vehicles and to achieve the ambient air quality emission standards prescribed by the Board & enclosed as Annexure-2 |
| 3 | The unit shall operate the water sprinklers effectively to suppress the dust emission during mining and vehicle movements. | Regular and Periodical water sprinkling on the haul roads carried out to arrest the dust generation during the movement of vehicles. Although we installed tyre washer to remove slush while transportation Annexure -3 |

| | | |
|----|---|---|
| 4 | The unit shall ensure that the vehicle hauling roads in the mines shall be adequately water sprayed using water tankers at regular intervals. | Regular and Periodical water sprinkling on the haul roads carried out to arrest the dust generation during the movement of vehicles. |
| 5 | The unit shall comply with all the conditions mentioned in the Environmental Clearance issued by State Environment Impact Assessment Authority Chennai vide Lr. No. SEIAA-TN/F.No.3000/2013/EC.40/1(a)/ARY /2016 dated 27/04/2016 and Extension of Environmental Clearance issued by State Environment Impact Assessment Authority Chennai vide Lr. No. SEIAA-TN/F.No.3000/2013/EC.40/1(a)/ARY/Extension /2023 dated 08/02/2023. | We are complying with all the conditions stipulated in the Environmental Clearance issued by MOEF, GOI, and New Delhi. Last EC compliance report was submitted for the period of Apr 2026 to Sep 2026 on 28.11.2025 |
| 6 | The unit shall develop green belt with thick canopy of trees of native species in the safety distance and periphery of the premises as per EC issued. | Green belt development is being continued in a systematic manner. Green belt development details enclosed in the Annexure-4 . |
| 7 | Peripheral plantations shall be raised as wind shield to minimize the dry tailings being air-borne and to prevent the soil erosion. | Peripheral Plantation has been developed all along the Mining leases. |
| 8 | The unit shall ensure that lime stone transport vehicle shall be properly covered with tarpaulin so as to prevent dust from being air borne during transit time | Limestone loaded vehicle will move from mines premises after it is covered with tarpaulin properly Annexure-5 . |
| 9 | The unit shall ensure to provide permanent water sprinkling arrangements along the vehicle haulage roads so as to suppress the dust during transportation of vehicles. | We regularly engage water sprinkling effectiveness through water tankers in the haulage rods to suppress the dust emission during transportation of vehicles. Annexure-2 |
| 10 | The unit shall not use 'use and throwaway plastics' such as plastic sheets used for food wrapping, spreading on dining table etc., plastic plates, plastic coated tea cups, plastic tumbler, water pouches and packets, plastic straw, plastic carry bag and plastic flags irrespective of thickness, within the industry premises. Instead it shall encourage use of ecofriendly alternative such as banana leaf, areca nut palm plate, stainless steel, glass, porcelain plates/ cups, cloth bag, jute bag etc. | We are following the ban on "use and throw away plastics" in our premises and We have made awareness program for the same & enclosed as Annexure-6 . |



B. Vikram Pyus

Dy. General Manager(Mines)

Chettinad Cement Corporation Private Limited
Ariyalur Trichy Road
Keelapaluvur -621707
Ariyalur (Dt)

KARUPPUR KILAPALUVUR LIMESTONE MINES (AREA: 26.145 HECTARES)

Compliance report for the conditions specified in the renewal consent Order 2505157546779 dated 07/02/2025 under Water Act

| No. | Special Additional Conditions | STATUS OF COMPLIANCE |
|-----|---|---|
| 1 | The unit shall obtain No Objection Certificate (NOC) from the Tamil Nadu Bio Diversity Board/National Bio Diversity Authority if the unit is using any Biological resources or knowledge associated thereto as per the provisions of Biological Diversity Act 2002. | We are not using any Biological resources or Knowledge associated thereto as per the provisions of Biological Diversity Act 2002. Hence this condition is not Applicable. |
| 2 | The industries shall take all efforts to use and popularize "Mission LiFE" logo and mascot which is available in TNPCB & MoEFCC website. They shall also request their employees to adopt "Mission LiFE" action points and document the same and furnish half yearly report to Board. | We have taken efforts to adopt the "Mission LiFE" in our activities life meeting and in our Awareness programs. Every Month "Mission LiFE" pledge has been taken by our entire Plant & Mines team in a Common meeting forum. Reports on this activities are enclosed as Annexure-1 |

| No. | Additional Conditions | STATUS OF COMPLIANCE |
|-----|---|---|
| 1. | The unit shall carryout mining activity as per the latest approval issued by IBM, Chennai dated: 10.12.2020 for the quantity mentioned therein to the corresponding year. | We have carried out Mining Activity as per Approved Mining Plan only. |
| 2. | The unit shall treat and dispose the sewage generated from the unit through septic tank arrangements. | One number of septic tank 5.6X2.15X1.3 meter followed by dispersion trench 3 X 2.4 X 1 meter are provided for the disposal of sewage in our mines office. Annexure-9 |

| | | |
|-----|--|---|
| 3. | The unit shall ensure that no trade effluent shall be generated from the unit's activities | No trade effluent is generated at any stage of Mining activity. |
| 4. | The unit shall comply with all the conditions mentioned in the Environmental Clearance issued by State Environment Impact Assessment Authority Chennai vide Lr. No. SEIAA-TN/F.No.3000/2013/EC.40 /1(a)/ ARY/2016 dated 27/04/2016 and Extension of Environmental Clearance issued by State Environment Impact Assessment Authority Chennai vide Lr. No. SEIAA-TN/F.No.3000/2013/EC.40/1(a)/ARY/Extension/2023 dated 08/02/2023. | We are complying with all the conditions stipulated in the Environmental Clearance issued by MOEF, GOI, and New Delhi. Last EC compliance report was submitted for the period of Apr 2026 to Sep 2026 on 28.11.2025 |
| 5. | The unit shall develop green belt with thick canopy of trees of native species in the safety distance and periphery of the premises as per the conditions of Environmental Clearance issued. | Green belt development is being continued in a systematic manner. Green belt development details enclosed in the Annexure-4 . |
| 6. | Peripheral plantations shall be raised as wind shield to minimize the dry tailings being air-borne and to prevent the soil erosion. | Peripheral Plantation has been developed all along the Mining leases. |
| 7. | Wherever practicable, the mine water shall be utilized for irrigation and to the plantation raised to stabilize the mine waste dumps. | The sump water stored and utilized for plantation purpose. |
| 8. | The unit shall complete the construction and revamping of siltation pond , fencing works for western side of mining lease as committed. | Siltation pond constructed and Fencing work completed and Annexure-7 |
| 9. | The unit shall ensure that the Kurunkadugal developed inside the premises is properly maintained and shall ensure the Kurunkadugal is with only the native species. | Kurunkadugal developed and being Maintained Annexure-8 |
| 10. | The unit shall not use 'use and throwaway plastics' such as plastic sheets used for food wrapping, spreading on dining table etc., plastic plates, plastic coated tea cups, plastic tumbler, water pouches and packets, plastic straw, plastic carry bag and plastic flags irrespective of thickness, within the industry premises. Instead it shall encourage use of ecofriendly alternative such as banana leaf, Areca nut palm plate, stainless steel, glass, porcelain plates/ cups, cloth bag, jute bag etc., | We are following the ban on "use and throw away plastics" in our premises and We have made awareness program for the same & enclosed as Annexure-6 . |


B. Vikram Pyus

Dy. General Manager(Mines)



Mission LiFE- Karuppur Keelapalur LS Mines

Environment pledge by Eco Club team members...



SAVE WATER

- 3 Layer Insulation water tank installed in Mines to avoid water evaporation.
- Rainwater stored in Mines pit and utilize for Control the dust and afforestation Purpose.
- Regularly measure the Water level with 2 installed Piezometer
- To avoid silt we constructed two numbers of Silting Pond







Ariyalur Works



சுற்றறிக்கை

நாம் அனைவரும் அறிந்திருப்பது போல, பிளாஸ்டிக் ஒரு தீவிர விளைவிக்கும் பொருளாக மாறியுள்ளது. உலகெங்கிலும் பிளாஸ்டிகினால் உண்டாகும் மாசுபாடு மற்றும் அதன் பாதிப்புகள் தீவிரமாகியுள்ளது. மனிதர்களுக்கு மட்டுமின்றி விலங்குகள் மற்றும் சுற்றுச் சூழலுக்கும் தீவிர விளைவிக்கும் பொருளாக பிளாஸ்டிக் உருவெடுத்துள்ளது.

தமிழக அரசு மற்றும் மாசுக்கட்டுப்பாடு வாரியம் அறிவுறுத்தியுள்ளவாறு நமது ஆலை மற்றும் காலனி வளாகங்களில் தடை செய்யப்பட்ட ஒருமுறை மட்டுமே பயன்படும் (Single use) பிளாஸ்டிக் பொருட்களை பயன்படுத்துவதை தவிர்க்க வேண்டும்.

அதனால் நமது சமூகத்தில் பிளாஸ்டிக் பயன்பாட்டை முற்றிலுமாக தடுக்க விழிப்புணர்வை ஏற்படுத்துவது முக்கியமாகிறது.

எனவே ஒருமுறை மட்டுமே பயன்படுத்தும் (Single use) பிளாஸ்டிக்கை முற்றிலுமாக தவிர்த்திடுங்கள்.

1. பிளாஸ்டிக் பைபை (carry bags) பயன்படுத்தாதீர்கள்.
2. பயன்படுத்திய பிளாஸ்டிக் பொருட்களை மறுசுழற்சியில் (Recycle) கொண்டுவராமல்.
3. சுற்றுச்சூழலுக்கு உகந்த மாற்று தயாரிப்பு பொருட்களை (Alternative products) மட்டுமே பயன்படுத்துங்கள்.
4. பிளாஸ்டிக் பொருட்களின் பயன்பாட்டை குறைப்பதில் அனைவரும் ஈடுபடுங்கள்.

இந்த விழிப்புணர்வு செயல்பாட்டில் உங்கள் ஆதரவு நம் சுற்றுச்சூழலைப் பாதுகாக்க முக்கியமாக அமைவதால் தயவுசெய்து இந்த தகவலினை உங்கள் குடும்பத்தினருக்கும் மற்றும் நண்பர்களுக்கும் எடுத்துக்கூறி அவர்களும் பின்பற்றுவதை உறுதி செய்யுங்கள்.

[Handwritten signature]
05/03/2025

ஆலைத்தலைவர்
தேதி : 05.03.2025



ADOPT SUSTAIBALE FOOD SYSTEM

- Food waste collected regularly and converted to Bio Gas as well as compost Manure.
- Dry waste sent to AFR



Garbage Collection & Segregation





Bio Gas generation



Compost Manure



Alternate Fuel Resource



ADOPT HEALTHY LIFESTYLES

- Limestone Material Moved with covered vehicle only.
- Mines Covered with Periphery Plantation to reduce noise pollution as well as dust pollution.
- Tire washer arrangement to remove slushes in the tipper. To avoid slippery condition during a rainy season.
- Always ensure PPE while working in Mines

Tarpaulin Covered Vehicles





Periphery Plantation



Compulsory PPE for Mine Workers



MOBILE WATER SPRINKLER



Concrete Road from Mines to Public Road (Tyre washer Platform)



Tyre washer arrangement to remove slushes in the tipper





CHETTINAD CEMENT CORPORATION PRIVATE LIMITED
Karuppur Keelapalur Lime Stone Mines [26.145 Ha]
Ariyalur Trichy Road, Keelapalur -621707
Ariyalur (Dt)

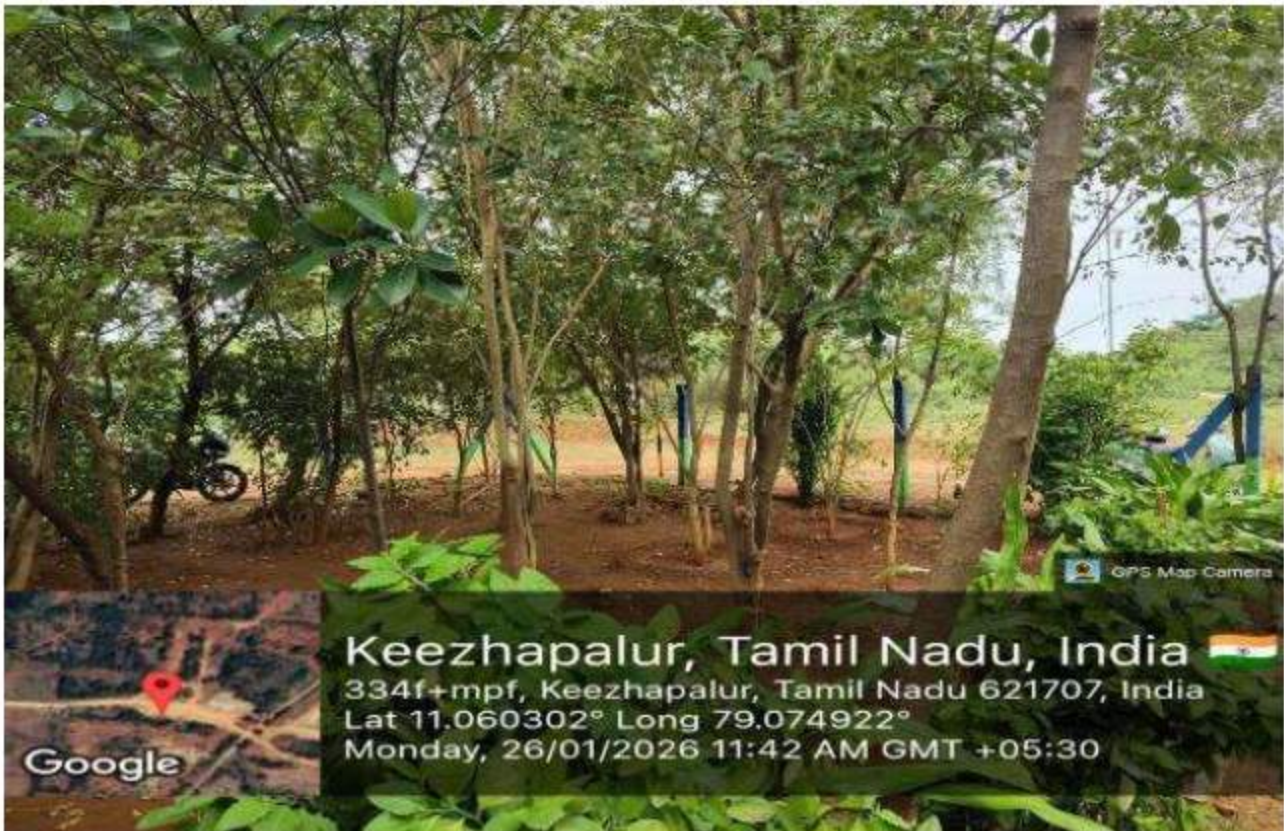
GREEN BELT DEVELOPMENT

| YEAR | Inside the Lease Area | | Outside the Lease Area | | Total | |
|--------------------------|-----------------------|------------------|------------------------|-----------------|--------------|------------------|
| | Area (In Ha) | Numbers | Area (In Ha) | Numbers | Area (In Ha) | Numbers |
| 2019-20 | 1.11 | 1,000.00 | 1.17 | 2,917.00 | 1.67 | 3,917.00 |
| 2020-21 | 2.10 | 4,020.00 | - | - | 2.10 | 4,020.00 |
| 2021-22 | 2.40 | 5,400.00 | - | - | 2.40 | 5,400.00 |
| 2022-23 | 2.76 | 5,300.00 | - | - | 2.76 | 5,300.00 |
| 2023-24 | 2.11 | 5,285.00 | - | - | 2.05 | 5,120.00 |
| 2024-25 | 1.24 | 3,100.00 | | | 1.24 | 3,100.00 |
| 2025-26 (till Jan 26) | 0.73 | 1,450.00 | | | 0.73 | 1,450.00 |
| TOTAL | 12.45 | 25,555.00 | 1.17 | 2,917.00 | 13.61 | 28,472.00 |

GREEN BELT DEVELOPMENT

| S.No. | Location | Latitude | Longitude |
|-------|------------|-------------------------------------|-------------------------------------|
| 1 | Location-1 | 11°03' 29.80"N to 11°03' 35.70"N | 79°04' 25.20"E to 79°04' 31.70"E |
| 2 | Location-2 | 11°03' 37.25"N to 11°03' 40.95"N | 79°04' 30.65"E to 79°04' 35.00"E |
| 3 | Location-3 | 11°03' 43.70"N to 11°03' 44.20"N | 79°04' 34.40"E to 79°04' 36.00"E |
| 4 | Location-4 | 11°03' 46.20"N to 11°03' 47.80"N | 79°04' 42.65"E to 79°04' 46.80"E |
| 5 | Location-5 | 11°03' 33.45"N to 11°03' 34.70"N | 79°04' 33.70"E to 79°04' 37.60"E |

GREEN BELT DEVELOPMENT







TRANSPORTATION OF MINERAL



Single Use Plastic Ban Awareness





Ariyalur Works



சுற்றறிக்கை

நாம் அனைவரும் அறிந்திருப்பது போல, பிளாஸ்டிக் ஒரு தீங்கு விளைவிக்கும் பொருளாக மாறியுள்ளது. உலகெங்கிலும் பிளாஸ்டிகினால் உண்டாகும் மாசுபாடு மற்றும் அதன் பாதிப்புகள் தீவிரமாகியுள்ளது. மனிதர்களுக்கு மட்டுமின்றி விலங்குகள் மற்றும் சுற்றுச் சூழலுக்கும் தீங்கு விளைவிக்கும் பொருளாக பிளாஸ்டிக் உருவெடுத்துள்ளது.

தமிழக அரசு மற்றும் மாசுக்கட்டுப்பாடு வாரியம் அறிவுறுத்தியுள்ளவாறு நமது ஆலை மற்றும் காலனி வளாகங்களில் தடை செய்யப்பட்ட ஒருமுறை மட்டுமே பயன்படும் (Single use) பிளாஸ்டிக் பொருட்களை பயன்படுத்துவதை தவிர்க்க வேண்டும்.

அதனால் நமது சமூகத்தில் பிளாஸ்டிக் பயன்பாட்டை முற்றிலுமாக தடுக்க விழிப்புணர்வை ஏற்படுத்துவது முக்கியமாகிறது.

எனவே ஒருமுறை மட்டுமே பயன்படுத்தும் (Single use) பிளாஸ்டிக்கை முற்றிலுமாக தவிர்த்திடுங்கள்.

1. பிளாஸ்டிக் பையை (carry bags) பயன்படுத்தாதீர்கள்.
2. பயன்படுத்திய பிளாஸ்டிக் பொருட்களை மறுசுழற்சியில் (Recycle) கொண்டுவாருங்கள்.
3. சுற்றுச்சூழலுக்கு உகந்த மாற்று தயாரிப்பு பொருட்களை (Alternative products) மட்டுமே பயன்படுத்துங்கள்
4. பிளாஸ்டிக் பொருட்களின் பயன்பாட்டை குறைப்பதில் அனைவரும் ஈடுபடுங்கள்.

இந்த விழிப்புணர்வு செயல்பாட்டில் உங்கள் ஆதரவு நம் சுற்றுச்சூழலைப் பாதுகாக்க முக்கியமாக அமைவதால் தயவுசெய்து இந்த தகவலினை உங்கள் குடும்பத்தினருக்கும் மற்றும் நண்பர்களுக்கும் எடுத்துக்கூறி அவர்களும் பின்பற்றுவதை உறுதி செய்யுங்கள்.

ஆலைத்தலைவர்
தேதி : 05.03.2025


05/03/2025

SILTATION POND



KURUNKADUGAL DEVELOPMENT

We developed Kurunkadugal. 1. Karuppur Keelapalur Limie Stone Mines, the details and photos are as given below.



TAMIL NADU POLLUTION CONTROL BOARD

O/o Joint Chief Environmental Engineer (M)
TNPCB/Trichy

Ref: Meeting conducted by the JCEE(M), TNPCB, Trichy with 17 category, RL & RM industries of Trichy Zone on 20.02.2023

Format for furnishing the details for the development of "Kurunkadugal" in the industry

A. Industries who have already planted trees for the development of Kurunkadugal

| S.No | Name and address of the unit | Whether Plantation Area identified is Inside/ outside the unit premises | Area in sq.m | Name of species planted | No of Saplings Planted | GPS location (Lat and Long Details) | Geo coordinates | Height of saplings | Where from the saplings were purchased |
|------|--|---|--------------|-------------------------|------------------------|-------------------------------------|-----------------|--------------------|--|
| 01 | Chettinad Cement Corporation Private Limited, Ariyalur - Trichy Main Road, Keelapalur Post PIN: 621707. Ariyalur District. | Outside | 28100 | Naval | 250 | Latitude | | 7 ft | District Forest Office, |
| | | | | Pungan | 150 | 11° 03' 30.40"N to | | 6ft | Ariyalur-Central |
| | | | | Illuppai | 250 | 11° 03' 35.90"N | | 5ft | Nursery Garden, |
| | | | | Neem | 250 | Longitude | | 7ft | Melakaruppur. |
| | | | | Eettimaram | 100 | 79° 04' 25.00"E to | | 6ft | |
| | | | | Total | 1000 nos. | 79° 04' 31.80"E | | | |



KURUNKADUGAL DEVELOPMENT



Annexure-9

CHETTINAD CEMENT CORPORATION PRIVATE LIMITED
Karuppur Keelapalur Lime Stone Mines [26.145 Ha]
Ariyalur Trichy Road, Keelapalur -621707
Ariyalur (Dt)

Septic tank of dimension 5.6 x 2.15 x 1.3 followed by dispersion trench of dimension 3.0 x 2.4 x 1.0 in meters are provided for the disposal of sewage in our mines office.

